



*Providing prestige in professional land planning and design."*

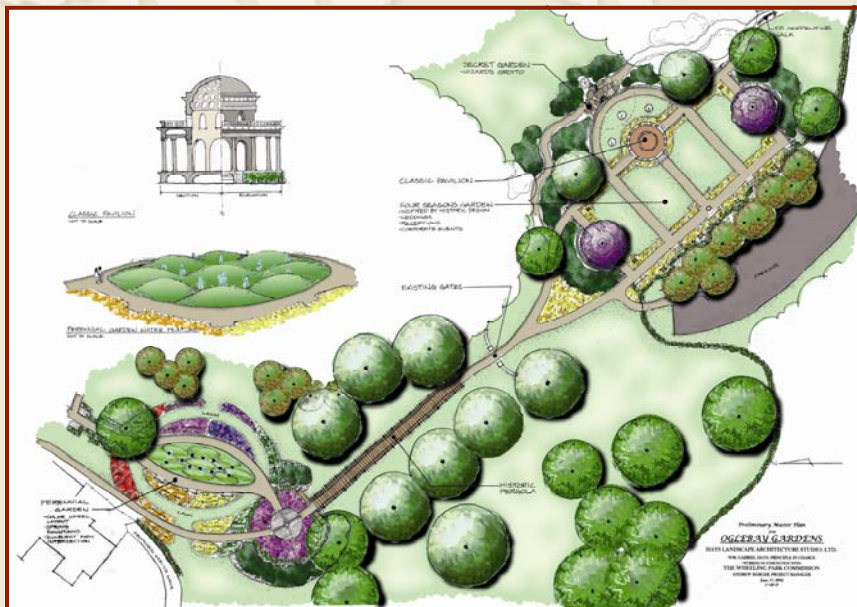
## Oglebay's Bissonnette Gardens Wheeling, West Virginia

**Services:**  
Master Planning  
Construction Documents

**Role:** Consultant

**Project Size:** 15 acres

**Project Cost:** NA



Hays LAS working with Wheeling Park Commission Director of Planning, Andy Barger, developed a **master plan** for the historic estate area surrounding the Oglebay Mansion. This plan dovetails into the overall resort master plan and provides direction for a “**botanical garden**” experience in the region. The focus of garden planning consists of interpreting design in addition to the botanical components. The project will teach visitors how to arrange plantings along with other hardscape design elements such as fountains, paving, and pergolas.

Of specific historical interest will be the reconstruction of several features from Oglebay's past such as the Waddington Pergola, the Mansion Porches, and the Water Tower/Overlook from the historic Quadrangle. Also, a garden interpretation building to reflect the historic architecture, a Pattern Garden, Shade Garden, restored Formal Garden, Corridor Gardens, Deer Proof Garden, Perennial Garden, Four Seasons Garden, and Secret Garden will grace the collection of gardens