



Services:
Inventory and Analysis
Schematic Design
Construction Documents

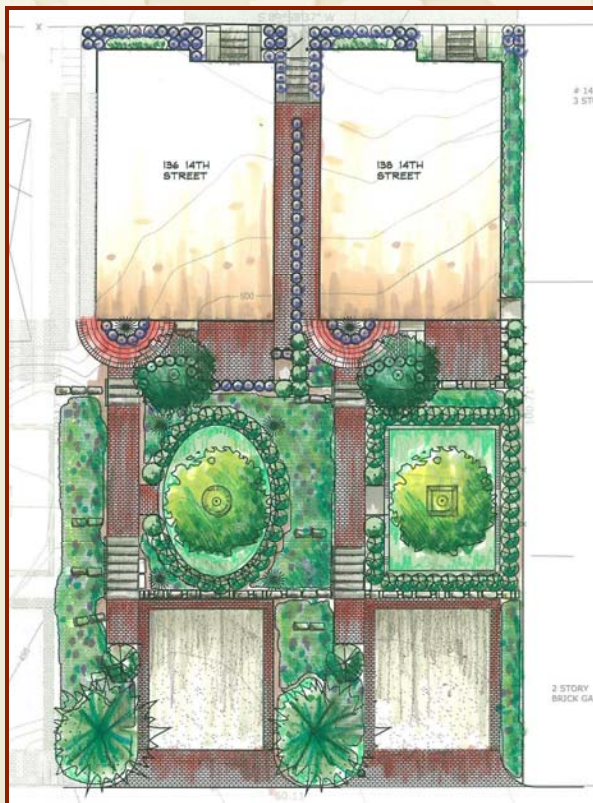
Role: Sub Consultant

Project Size: .07 acres

Project Cost: NA

Providing prestige in professional land planning and design."

14th Street Housing Wheeling, WV



The 14th Street infill housing project in Wheeling, West Virginia is designed to be the state's first LEED certified residential housing project. Kayafas Architects designed the green buildings to fit into the architectural vocabulary of the narrow lot homes. Subsequently, the landscape architecture design included period style lots complete with terrace gardens.

To respond to the LEED requirements, Hays LAS proposed reuse of recycled, local street brick and crushed local mill slag for the paving materials. Furthermore the downspouts are directed to a water feature separating the lots that culminate in a rain garden for storm water retention.

The planting is historically appropriate as well as drought tolerant. Flowering and shade trees offer shade to the southern exposure of the homes maximizing solar gain in winter while shading in the summer. A limited planting palette reduced the amount of maintenance.