



Providing prestige in professional land planning and design."

Historic Blaine Bridge Park

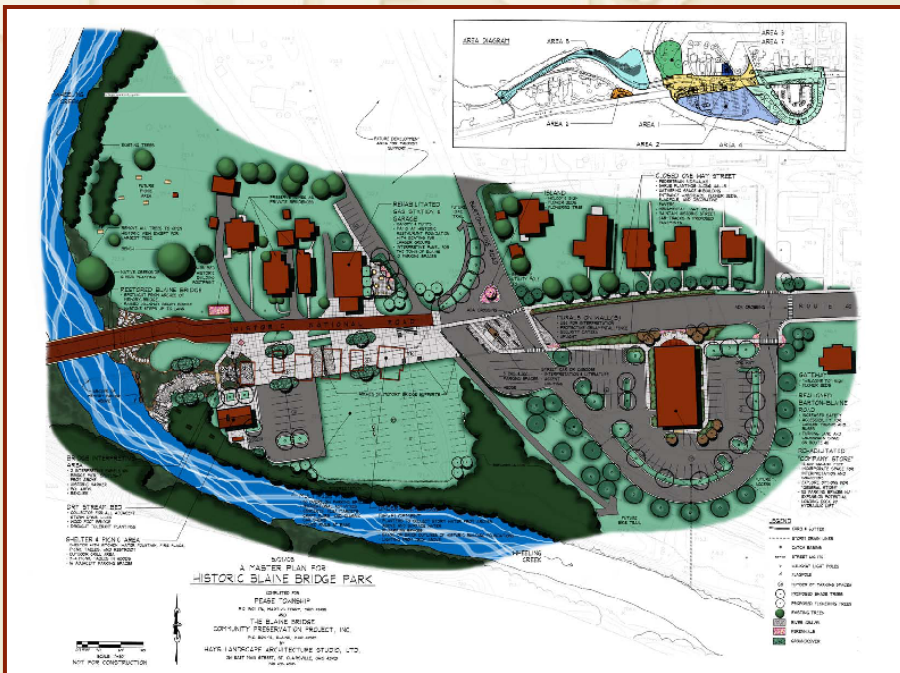
Blaine, Ohio

Services:
Inventory & Analysis
Master Plan with Phasing
Opinion of Probable Cost

Role: Prime

Project Size: 58 acres

Project Cost: \$1,985,926



The Blaine Bridge is a much-celebrated structure on the Historic National Road in eastern Ohio. Having been designated the state's Bicentennial Bridge, the oldest bridge in Ohio, it is now moving toward becoming a preserved tourist attraction. History dates back to the construction of National Road in Ohio beginning in 1825.

Hays LAS guided the master planning process to create a park like atmosphere around the bridge, allowing for tourist traffic and streetscape improvements, and to interpret the history of the bridge in its Blaine and National Road context. This master plan serves as an avenue of marketing the project to receive funding and community support.

Over the three stately stone arches, some of the most significant individuals of the 19th and early 20th century have travelled, as the road was a conduit for the growth of our nation westward.

In the 1990's, the Blaine Bridge was closed for traffic after almost 175 years of service. Soon after, the largest arch collapsed. The Ohio Department of Transportation then provided some assistance in rebuilding the arch while at the same time the Ohio Historic Preservation Office, in conjunction with Gabe Hays, organized an effort to get a local grassroots effort established. A spark of interest ignited, and today Sue Douglass leads "The Blaine Bridge Community Preservation Project." In less than one year of hard work, the group secured funding for an engineering study of the bridge and this overall master plan for the bridge site and adjacent community.